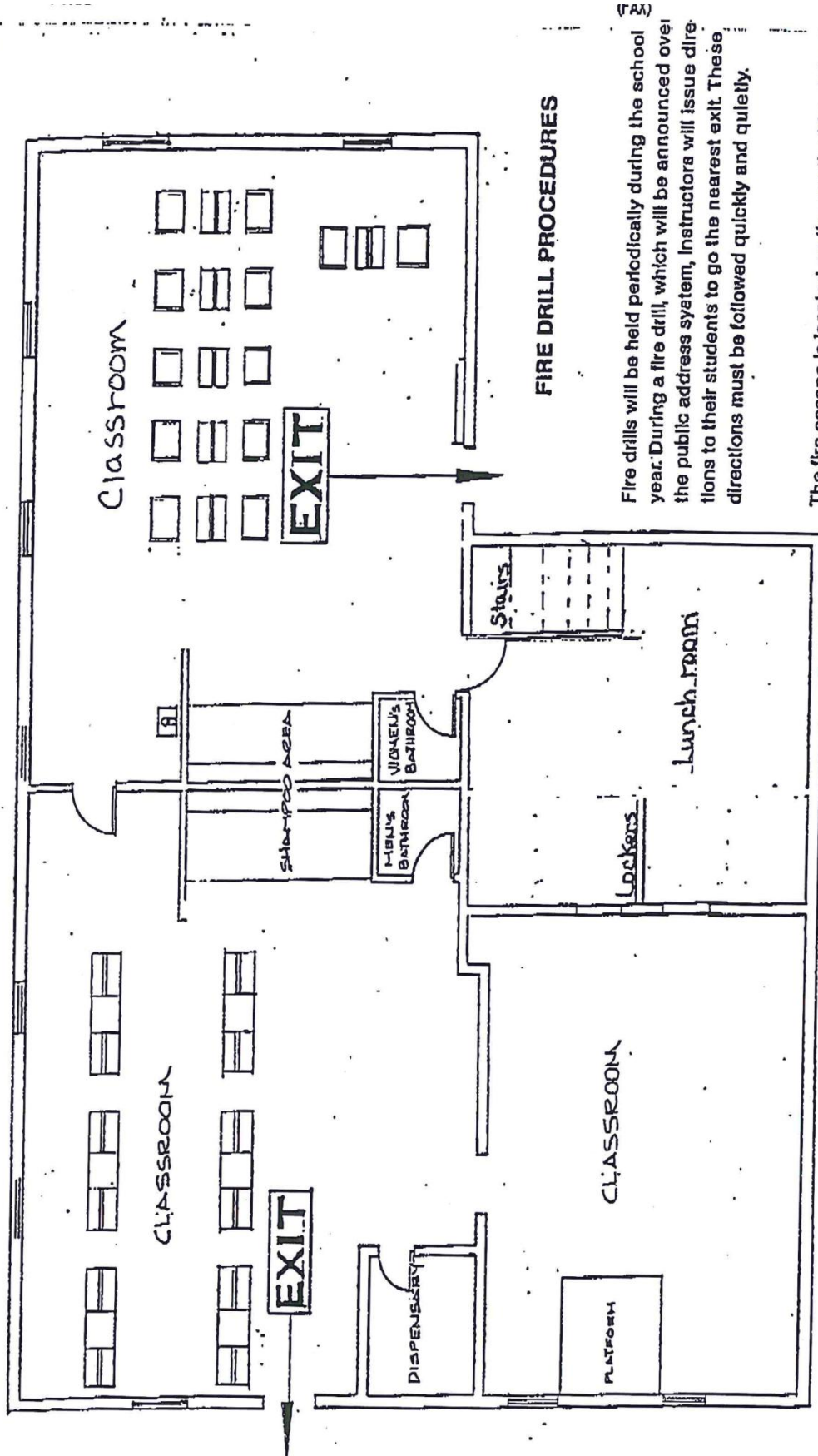


HFI EMERGENCY EXITS



FIRE DRILL PROCEDURES

Fire drills will be held periodically during the school year. During a fire drill, which will be announced over the public address system, instructors will issue directions to their students to go to the nearest exit. These directions must be followed quickly and quietly.

The fire escape is located on the south side of the building at the stairwell. The front exit will also be used. Fire extinguishers are placed throughout the school the classrooms and on the clinic floor.

P.002/003

HFI EMERGENCY EXITS

FIRE DRILL PROCEDURES

Fire drills will be held periodically during the school year. During a fire drill, which will be announced over the public-address system, instructors will issue directions to their students to go to the nearest exit. These directions must be followed quickly and quietly.

THE EXIT is located on the west side of the building at the stairwell. The front exit will also be used. Fire extinguishers are placed throughout the school in the classrooms and on the clinic floor.

